

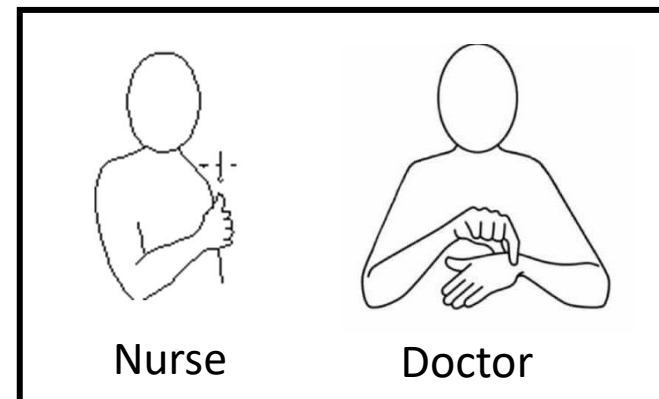
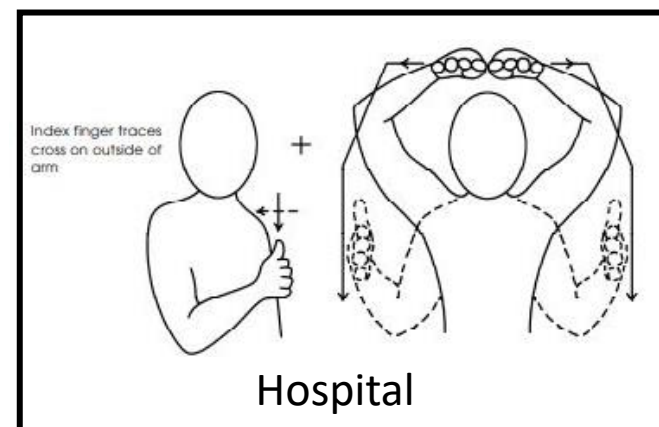
My Paediatric Review



Sometimes we go to the hospital
to see a Nurse or a Doctor.

This is called my Paediatric
Review.

This is to check that my body is
healthy.



I will go with

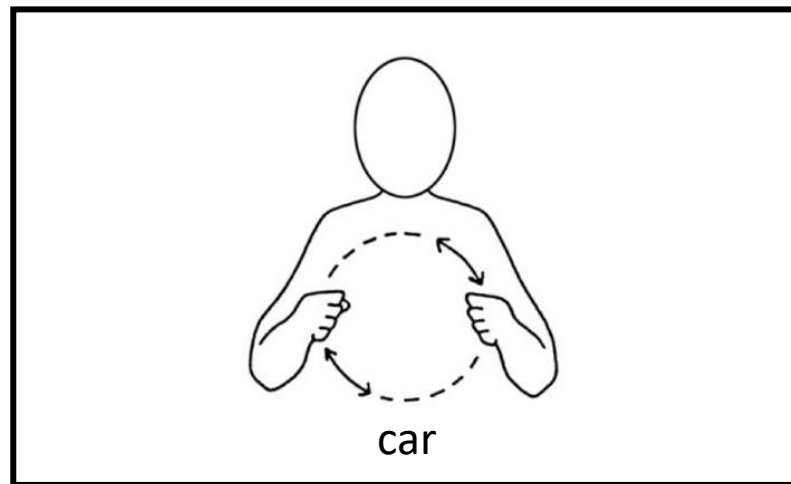
(write on laminate)

They will stay with me while I
am there



Use car or bus page (next) as appropriate)

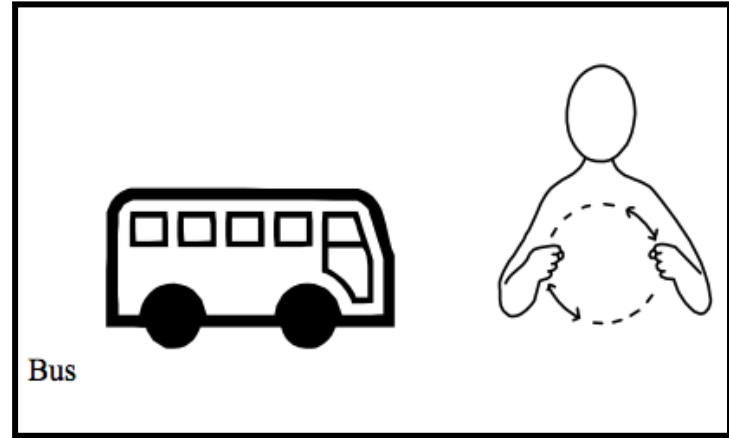
We can go by car.



**We will park in
the car park.**



We can go by bus



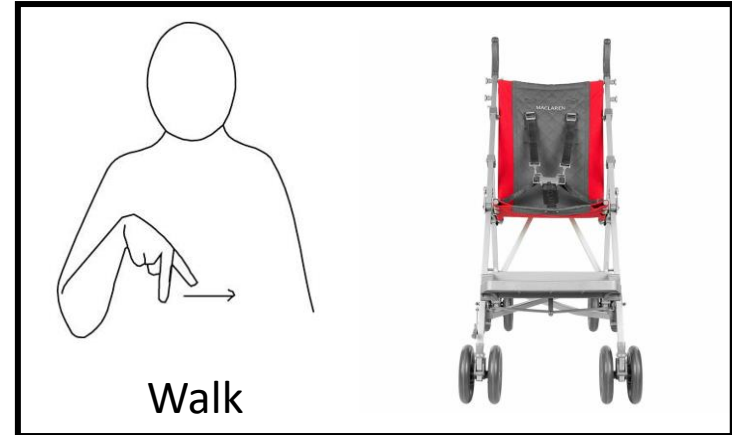
We will get off the bus
outside the hospital



Now we will walk to the Women and Children's building.

I can go in my buggy or wheelchair if I use one

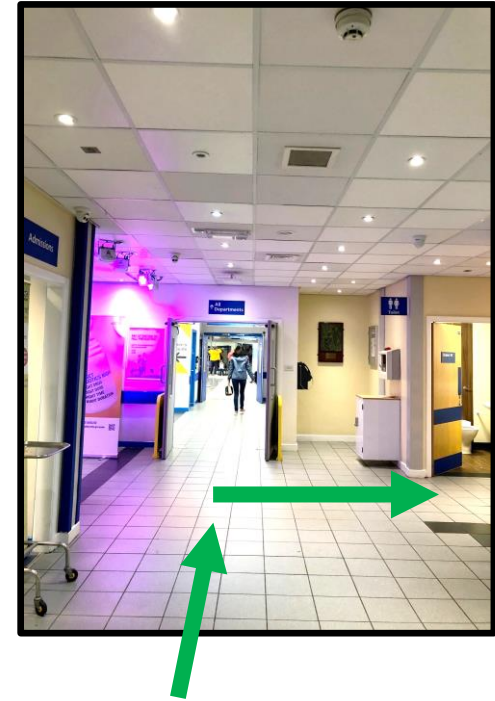
This will take 5 or 10 minutes



Next. We will go in



Now we are in the corridor

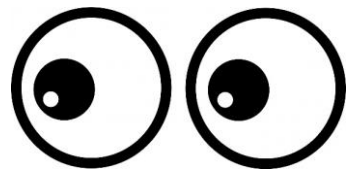


Do you need the toilet?

Turn right here if you do

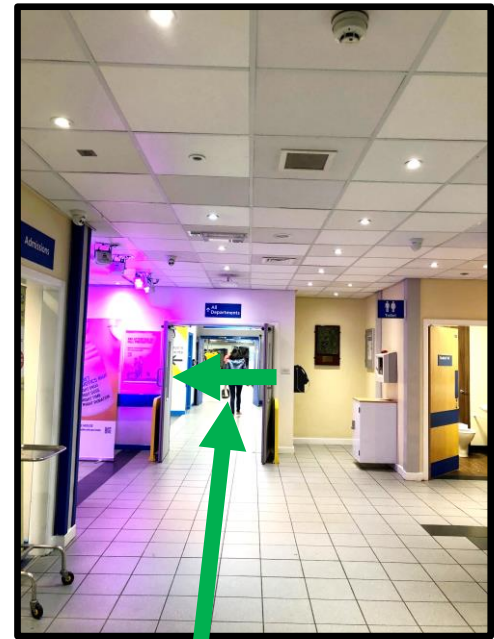


Next. Keep going forward.



**Look for the sign to
Children's Outpatients.**

Then turn left at the sign.



Do you need a nappy change?
You can go in here if you do



Now. Go through these doors



Next... We will wait here.
Someone will be sitting here.
We can tell them your name.

Then..we will sit down in this
room.

We will wait until someone calls
your name. You can do some
good waiting. Well done.



Good



Waiting



When someone calls your name we can go with them.

First I will stand up straight on the big ruler. I will stay still. The Nurse will look at the numbers to see how tall I am. I can get off when the nurse tells me.



Next I will stand on the scales. I will stay still. The Nurse will look at the numbers to see how heavy I am. I can get off when the nurse tells me.



Well done!



**Now it is time to see the Nurse
or Doctor. They are upstairs**

First.....

We will go back to the corridor

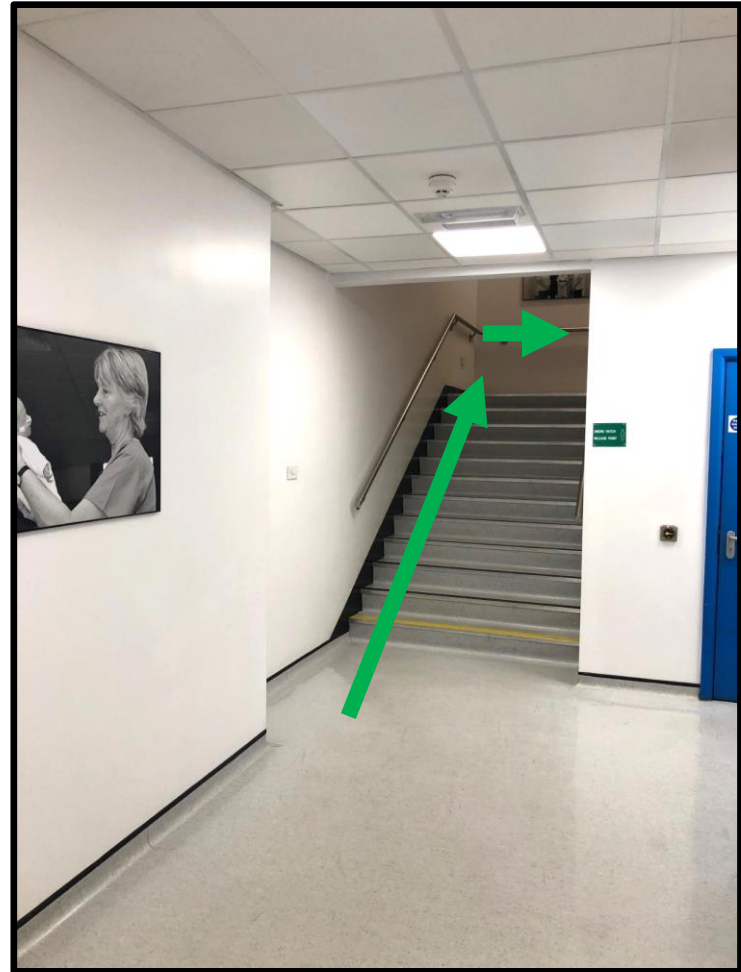
**Next we will go through these
doors**

Nearly there.....



**Then we will go up these stairs
to the first floor.**

We will turn right at the top



There are some lifts if we need to use the lift.



We will go to the first floor

Press number 1 button 



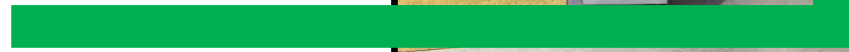
When we come out the lift we will turn right (this way)



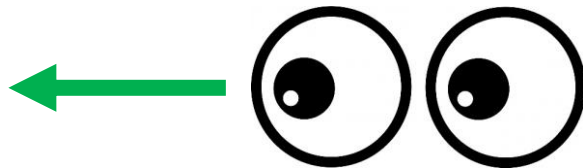
First we can wash our hands here



Next we will go down here



Look left.



You will see this door



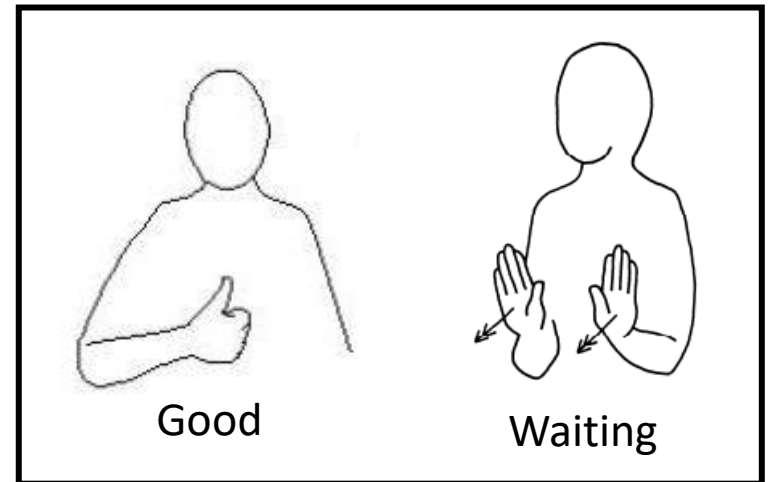
Go in.

Well done! You have arrived!



This is another waiting room.
We can sit down and have a
rest.

We can do some good waiting



Next. The doctor or nurse will ask us to come in the clinic room.

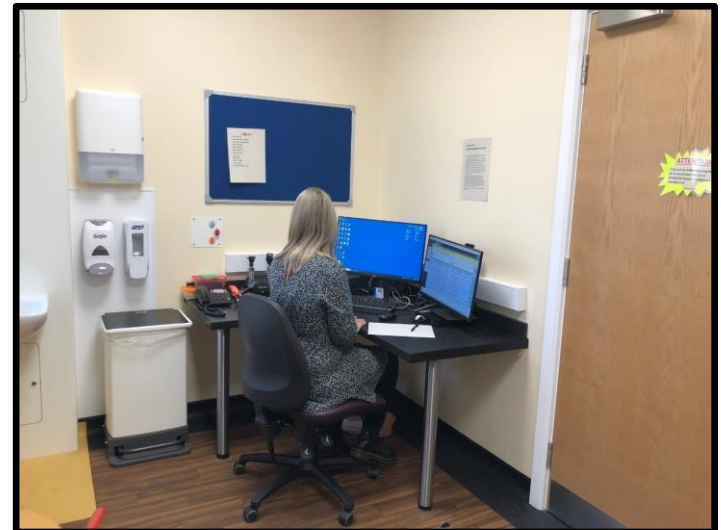
It looks like this



**We can sit on a chair
We can sit together**



**The doctor or nurse are friendly.
They will talk to your adult.
They will talk to you too. You can
tell them about you.
They will type into the computer
while they talk. It will take about
half an hour.**



Now you are finished, well done!

Thankyou for your...



Good waiting



Good sitting



Good signing



Good listening



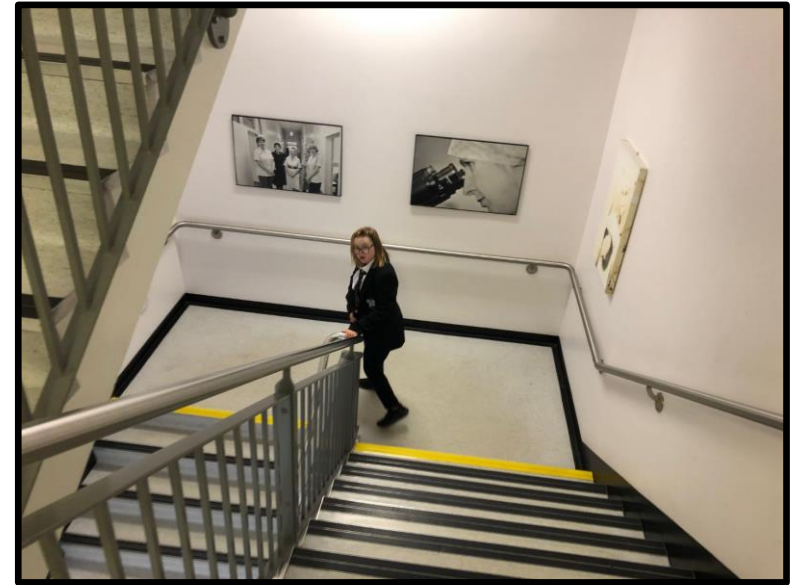
Good talking



Maybe you can get a treat now!

Bye

Time to go.



Next. You might go back to
school

You might go home



Parent/carer information

- Paediatric review should happen around once per year up to age 18. Call to ask if you have waited longer (01482 315586)
- The appointment letter will say **Neurogenetic Clinic** on it
- You will be seen by Consultant Paediatricians (Dr Highet or Dr Samuels) or Kate Woodrow, Advanced Nurse Practitioner. You can call if you want to find out who you will be seeing
- Your review will likely alternate annually between consultant review or Nurse review.
- Consultants and Nurse Practitioner work closely together to discuss your child's health need's, therefore if you do not see a consultant they will still be aware of your latest review and current plan of care.
- Please be aware , it can take up to half an hour to park, walk over to the building and then up to find the clinic room with a slow moving child. Please allow enough time because it is not possible to run over time on appointment slots. **If possible please arrive ten minutes earlier than your appointment to allow time for weighing/measuring.**
- As shown in the social story, on arrival at the Women and Children's building, **Please check in at the downstairs Children's Outpatient desk first. Your child will be weighed/measured by a healthcare assistant there, and then you can make your way upstairs to the Paediatric outpatient clinic room**
- An appointment slot is about half an hour long so it may not be possible to cover absolutely everything in this time
- **Page 10 and 11 of the Hull Down Syndrome Care Pathway** list the things that are covered in a review. If you have concerns at all you want to prioritise please tell the Doctor or Nurse at the start of the appointment. [Downs Syndrome Hull – Hull CCG](#)
- From age 14 onwards your child will be eligible for an Annual Learning Disability health check at their GP. They can attend both this, and the review. From age 14 onwards the paediatric team will start to discuss transition to adult services at reviews